

Monday 23rd September

Phonics Information Evening



Why the change?

The context of Phonics.



Short Introduction into ELS

Every school has to deliver Phonics. Schools do not have to use a validated phonics scheme but it does take a brave and time rich school to go it alone in the world of Phonics! 9/10 use a validated scheme.

We have selected Essential Letters and Sounds. This is a phonics programme and supports your children to develop the skills and knowledge needed for reading.

ELS uses consistent, ambitious and inclusive.



Merge between RWI and ELS

- Reception – Reception children have begun ELS from day 1. They have started with the sounds; s,a,t,p,i,n.
- Year 1 – Every child has completed a diagnostic assessment. This identifies which sounds they currently know. As the order of ELS and RWI is different, we have analysed the children's current knowledge and are reviewing some of the Reception sound.
- Year 2 – Year 2 are consolidating phase 5 graphemes that have been taught. ELS exposes the children to alternative graphemes and new patterns. This will enhance their accuracy of spelling.



Pure sounds

Me, then you!

S –

A –

T –

It is important to note that about schwa. You don't want the children to be putting a 'u' at the end of the sounds.

The structure of ELS

Weekly lesson structure for teaching new phonemes and graphemes

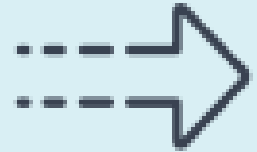
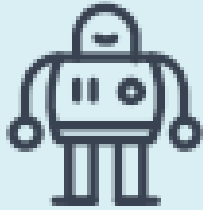
Day 1	Day 2	Day 3	Day 4	Day 5
Review Teach new sound Practise Use the Apply sound-specific sheet Review	Review Teach new sound Practise Use the Apply sound-specific sheet Review	Review Teach new sound Practise Use the Apply sound-specific extract sheet Review	Review Teach new sound Practise Use the Apply sound-specific extract sheet Review	Review newly taught sounds for the week, previously taught graphemes, and harder to read and spell (HRS) words Practise – reading and writing words Apply – reading decodable books and writing phrases and sentences

Decodable books

It is vital that whilst children are learning to read, they read books that match their phonic knowledge. The books your child has been assigned have been carefully matched to every aspect of the programme.

Children keep the books for one week and re-read them at least four times in this period.

Consistency is key!



ELS phonics lesson

A typical ELS lesson.

[Reception Spring 1 Week 2 Day 1 \(oxfordowl.co.uk\)](http://oxfordowl.co.uk)



Home Support

- E-Books will be assigned weekly. We encourage you to re-read these books at least 4 times. This supports your child's sound recognition, word recognition and fluency.
- We will be sending out physical books as well – these will not match previous book bands. These will correlate to the current grapheme the children are learning. The children will transfer to book bands when they are ready.

